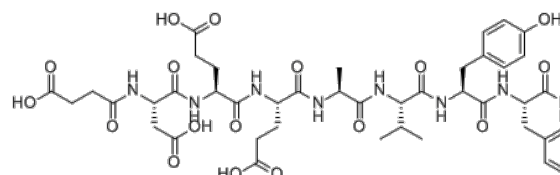


Product Name : IRL1620
Cat. No. : PC-20103
CAS No. : 142569-99-1
Molecular Formula : C₈₆H₁₁₇N₁₇O₂₇
Molecular Weight : 1820
Target : Endothelin Receptor
Solubility : 10 mM in DMSO



Biological Activity

IRL1620 (IRL-1620, Sovateltide, PMZ-1620) is a potent, selective agonist of endothelin ETB receptor with K_i of 0.016 nM, highly selective over ETA receptor ($K_i=1900$ nM).

IRL-1620 prevents oxidative stress and cognitive impairment induced by A β in normal and diabetic rats.

IRL-1620 shows neuroprotective effect in rat brain ischemia model, increases angiogenesis and neurogenesis, and promotes the recovery of neuronal function.

IRL-1620 also promotes neural progenitor cell differentiation and maturation in vitro and in vivo.

References

Yukimura T, et al. Eur J Pharmacol. 1994 Nov 3;264(3):399-405.

Kobari M, et al. Neurosci Lett. 1994 Aug 1;176(2):157-60.

Ranjan, et al. Sci.Rep. 2020. 10 12737.

Caution: Product has not been fully validated for medical applications. Lab Use Only!

E-mail: tech@probechem.com